

# SCOTT

## MARATHON



# RUNNER'S GUIDE



INSTITUTIONAL SPONSOR:



TITLE SPONSOR:



OFFICIAL SPONSOR:



OFFICIAL MAPPING:



SUPPORTED BY:



ORGANIZING:





# GET YOUR TICKET!

It is essential that you fill out this form to download your ticket and be able to access the festival to collect your bib.

[GET YOUR TICKET](#)





## INTRODUCTION

### “The most authentic marathon circuit in Spain”

The start will be at Fontajau to take the direction towards Sant Gregori following the Ter and the Llémèna. We will cross and follow it against current throughout the first half of the course. We will start the first climb at the “Font del Raig” where we will find the first path. Half way/ climb of Sant Grau, we will turn to enjoy the first downhill part which takes us to the “Veïnat de l’Esglesia”, passing by magical points like “Font de Ca Verdeguer”.

After passing next to Ginestar, all participants together will start the largest climb until the “Serrat de Ca Polità”, where the short distance group will continue 200m until they find the long a part of the long distance track again. The XCM group will start a downhill part until “Llorà”. After that, we will pass through the “Pla de Sant Joan”, a place full of mountains and with marvellous views to continue towards the “Serres” to continue through an authentic circuit which every Mountain Bike Lover will enjoy from start to finish.

Once the downhill part through the ‘Bosc de Ca Soms’ is done, the last ascent will wait for the participants which will pass through the Bosc del Bac until they will find the XCP course again. The descent part won’t be too long until the Ter river which will be followed until the height of Bescano where the last uphill part of 70M+ starts. Here, the final positions can still be decided and to all those who haven’t portioned their power, might live with the consequences! Followed by a small descent, we will find the Ter river again as well as the Llémèna which will bring us to Fontajau again.

At this point, all will be flat, crossing some fields, to cross Sant Gregori and the Ter to arrive at the other side of the river to come to Fontajau where the pleasure and happiness is waiting for all those who finished this course and who will keep all participants speechless.

## TECHNICAL DATASHEET

DATE	23.09.2023
HOUR	09:30a.m./9:35a.m./9:35a.m.
LOCATION	Fontajau Pavilion (Girona) 
CIRCUIT	XCM 62KM / 1.570M+ XCP 44KM / 956M+

## DOWNLOAD YOUR TRACK



XCM

XCP



GARMIN.



**TUTORIAL:  
HOW TO TRANSFER  
YOUR WIKILOC TRACK  
TO YOUR GRAMIN?**



## BIB COLLECTION SCHEDULE

Friday 22.09.23 12:00p.m. – 19:15p.m.	Saturday 23.09.23 07:00a.m. – 09:00a.m.	COLLECTION INSIDE PAVILION
--	--	-------------------------------

**To get the plate number, you will need to provide the following documentation:**

- If you have paid for the organization's insurance, you must provide your DNI or NIE.
- If you have not paid for the insurance, you must provide your DNI or NIE and the ORIGINAL LICENSE of the UCI, the Spanish Cycling Federation or the Catalan Cycling Federation.
- For minors it is mandatory to present the parental authorization.

**To pick up a friend's plate number, you will need to provide the following documentation:**

- If she/he has paid for the organization's insurance, you must provide your DNI or NIE (It can be a photocopy).
- If she/he has not paid for the insurance, you must provide your DNI or NIE (it can be a photocopy) and the ORIGINAL LICENSE of the UCI, Spanish Cycling Federation or Catalan Cycling Federation.

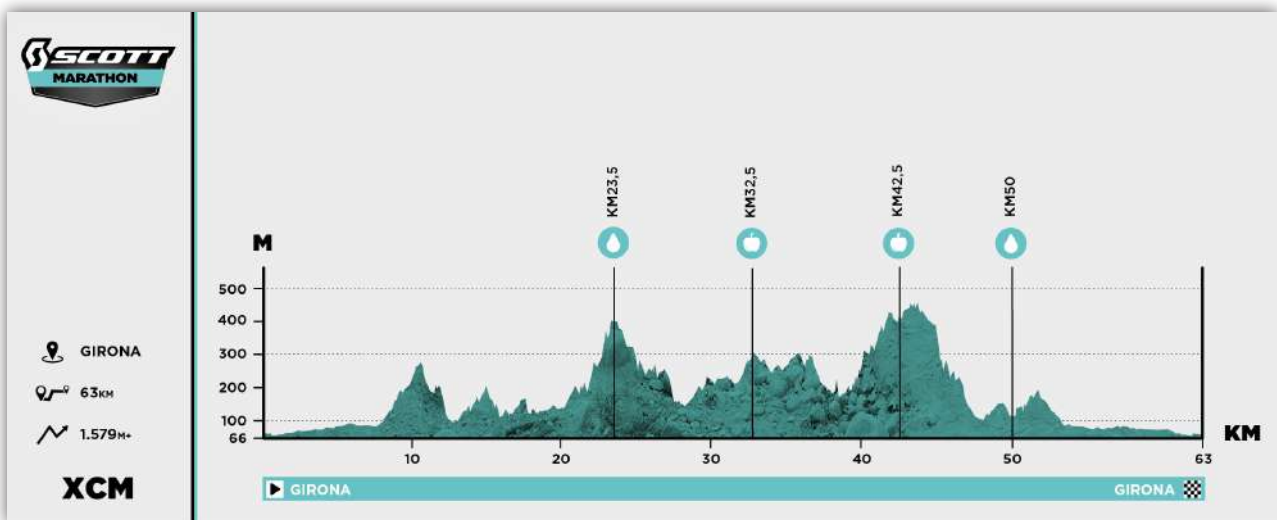
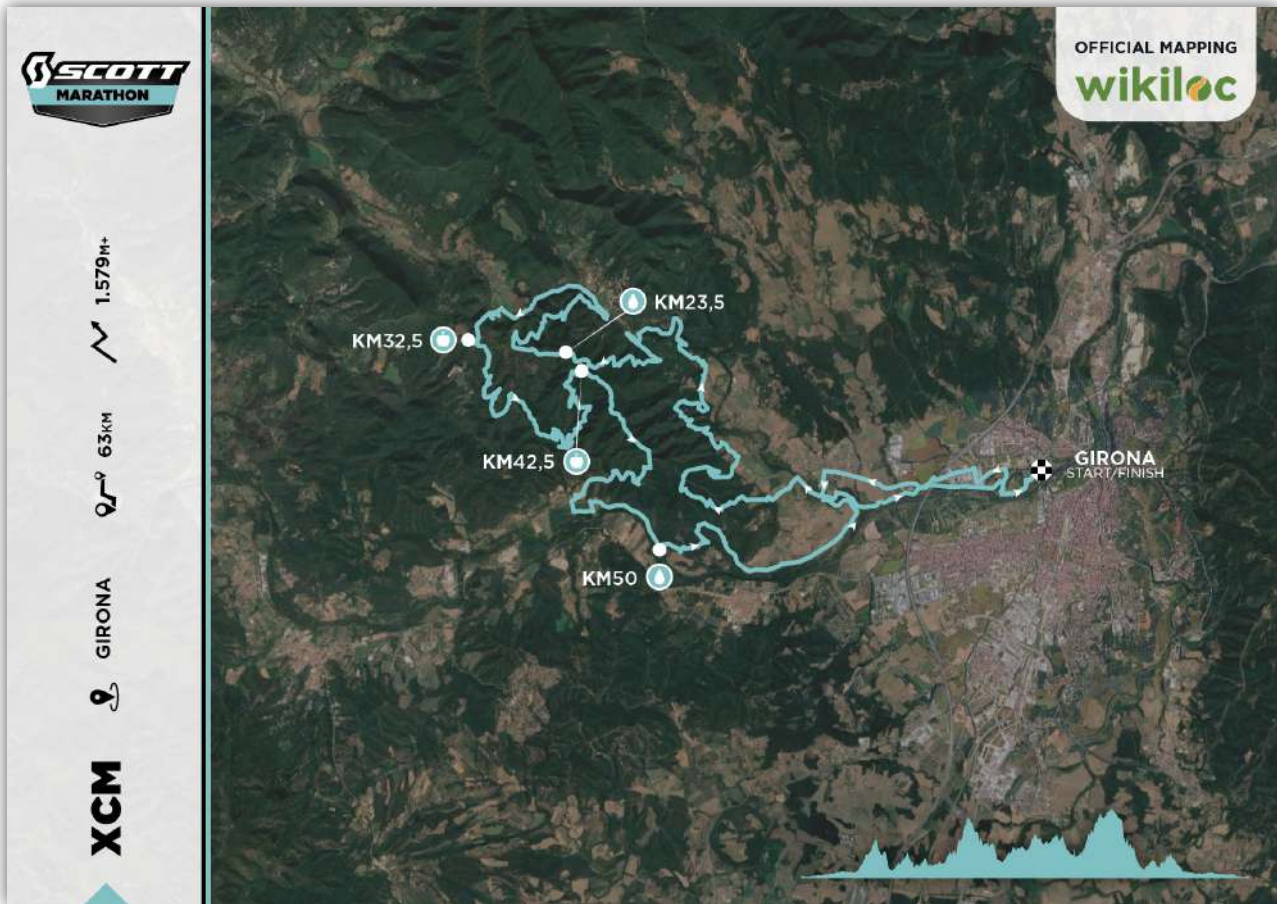
## T-SHIRT





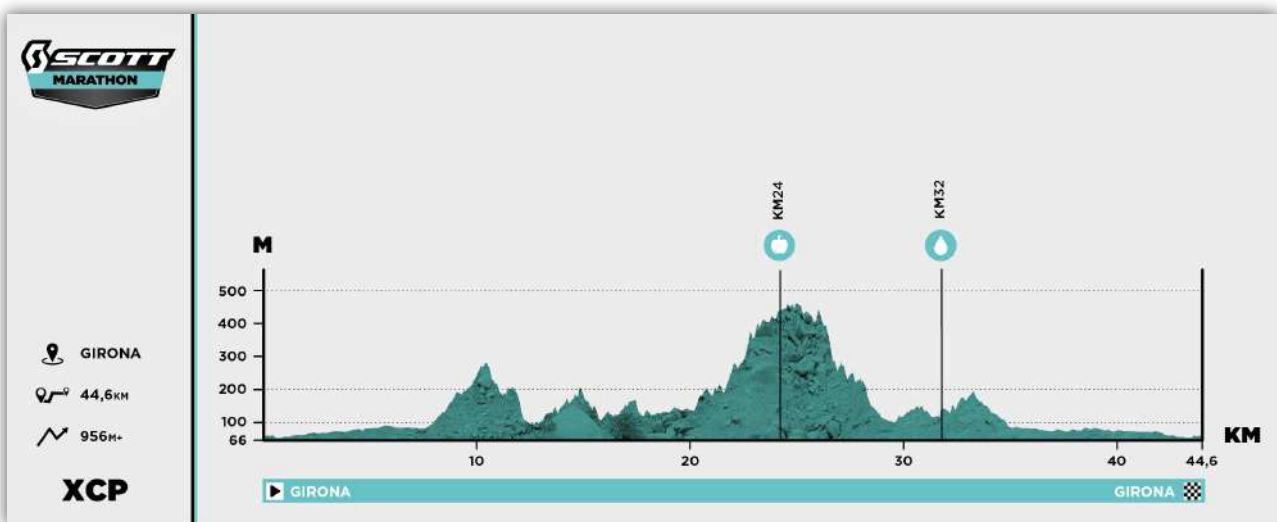
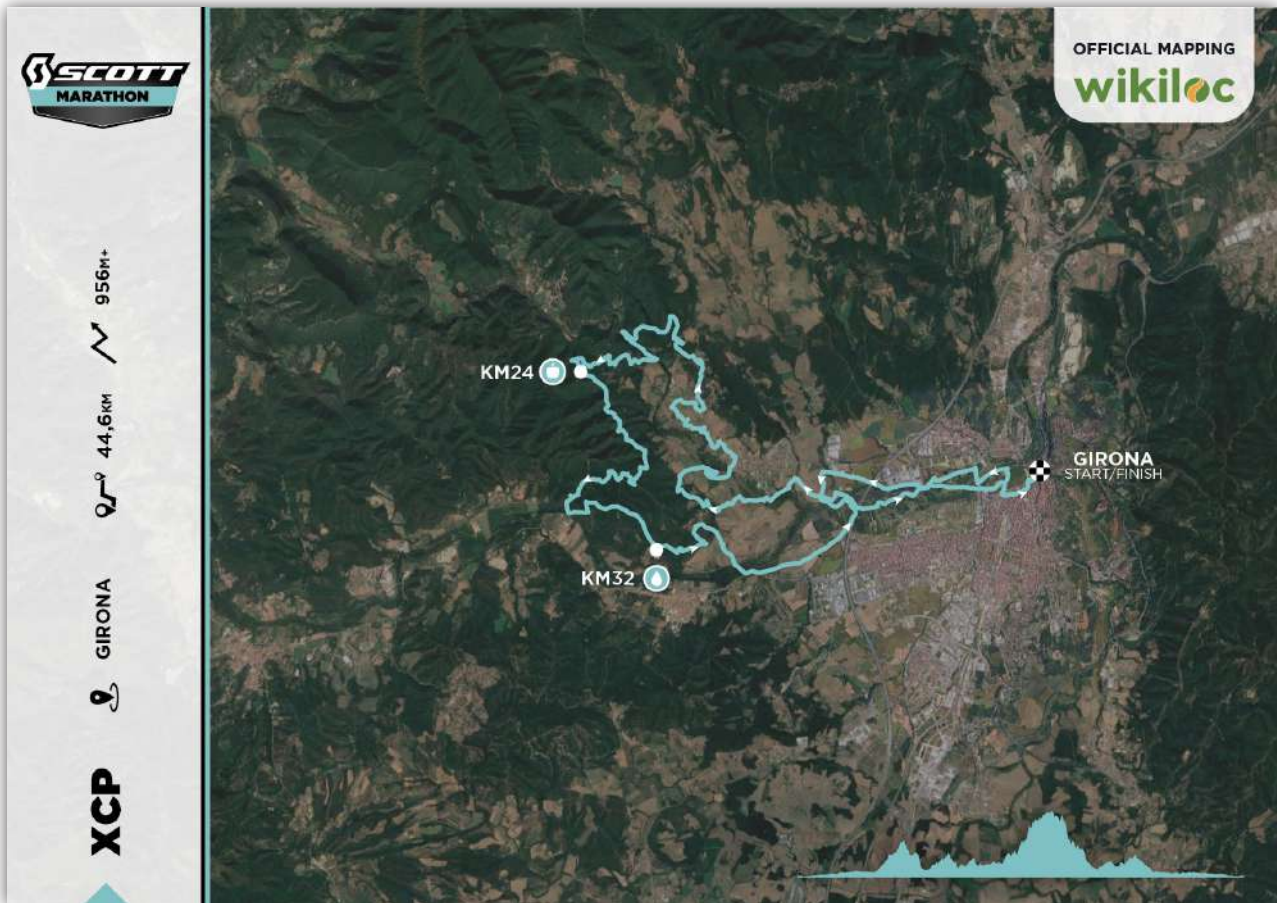
# SCOTT MARATHON

## ROUTE & PROFILE XCM



# SCOTT MARATHON

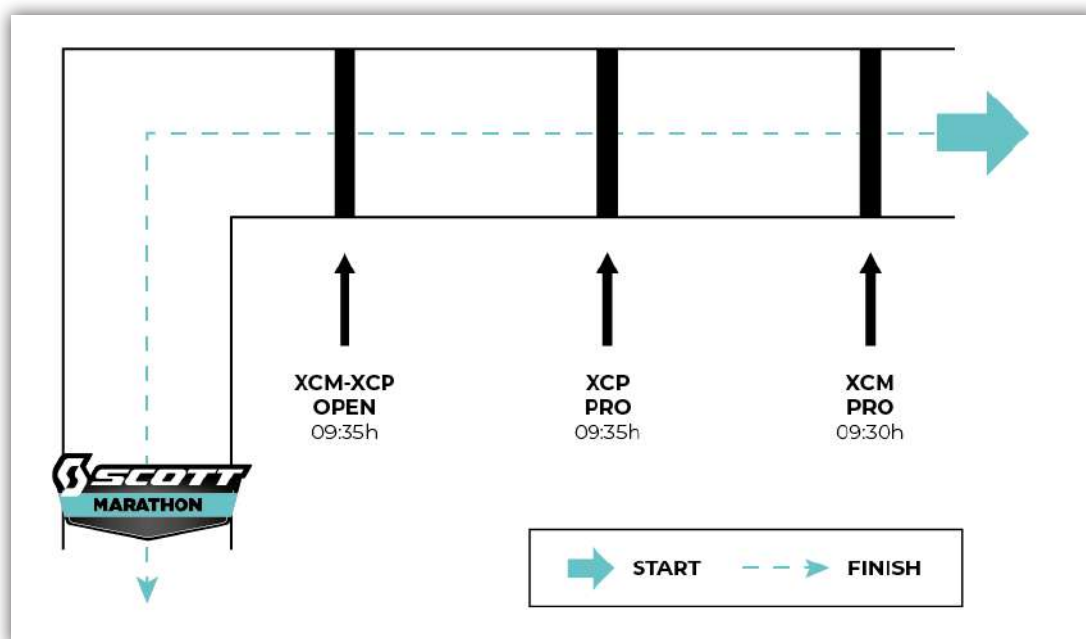
## ROUTE & PROFILE XCP





## CALL BOXES

Your place on the starting grid will depend on your race number. Your number is determined by the type of race you have registered for XCM/XCP and whether it is the PRO/OPEN discipline. Pay attention to your place on the starting grid and get ready to enjoy yourself!



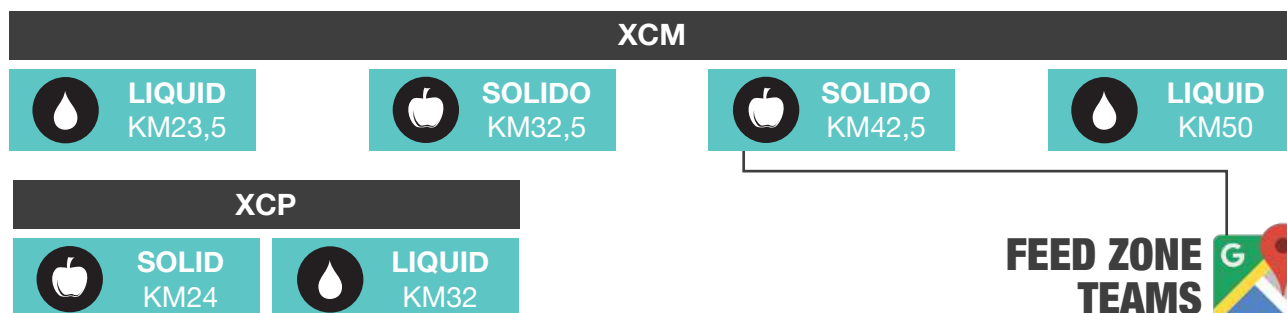
## STARTING SYSTEM

1. Make your way to the starting point (**green zone of the festival**) at the starting arc of Scott Marathon BTT by Continental
2. There will be four starting groups according to distance, type of race & modality (XCM/XCP-PRO/OPEN).
  - Group 1 - XCM PRO **starting at 9:30 AM**
  - Group 2 - XCP PRO **starting at 9:35 AM**
  - Group 3 - XCM/XCP OPEN **starting at 9:35 AM**





## FEED ZONES



## FINISH FEED ZONE

On arrival you will receive a bag of ropes (Goufone gimsac) with:

- Bottle of water (50cl)
- Arrival refreshment and a hot meal (inside the festival)
- Piece of fruit
- Drink

## OTHER SERVICES

There will be shower and dressing room service.

There will be wardrobe service.



wikiloc

Accede a las rutas oficiales de la SEA OTTER EUROPE en Wikiloc



## CHECKPOINTS

During all the course, there will be different control points for **the security of all participants**. A key point for our organization is to prevent all kinds of unforeseen accidents or events in general.

In case of an accident, the controls have the task to inform the following rider about the incident and to protect the **accident zone** as well as the **injured rider**. Then, the control person will have to contact the control director and to inform about the incident and value if medical help is needed or not.

## AWARDS CEREMONY

At 1:30 pm, the prizes will be awarded to the first 3 classified in each category in PRO (competition) mode, both in the long distance (XCM) and in the short distance (XCP). The 1st ranked team will also receive a prize.

## ECO-RESPONSABILITY

It is very important to not throw trash into the nature. That way we can respect the environment, the flora and the fauna which is offered by Girona.

The solidarity, the respect within the participant, the volunteers, the sponsors and the public are mandatory and important elements of the Canyon Girona Gravel Ride.

Every rubbish that is thrown on the ground must be picked up by somebody. If we don't take care regarding this aspect, we won't have volunteers.

[RULES](#)

[EMERGENCY PHONE 638602777](#)



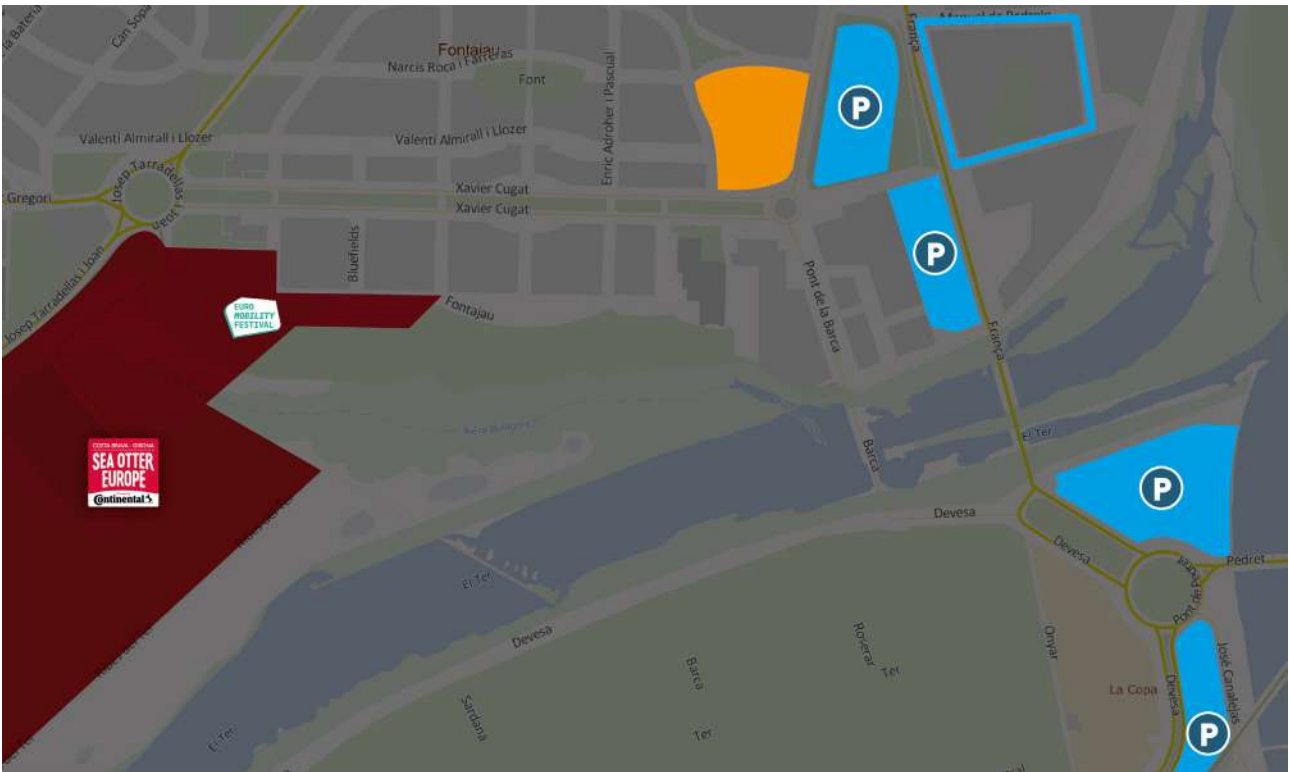
COSTA BRAVA - GIRONA

# SEA OTTER EUROPE

Presented by



## HOW TO GET THERE/WHERE TO PARK?



ROUTE START



ROUTE END



PARKING CAMPINGCARS



PUBLIC PARKING

ROUTE TO GO

ROUTE BACK

PARKING ZONES

ONLY ACCREDITED

\*Launcher bus: Continuous start

COSTA BRAVA - GIRONA

# SEA OTTER EUROPE

Presented by  
**Continental** 

## BUS TRANSFER TIMETABLE

Friday 22.09.23 from 11 AM to 8:30 PM

Saturday 23.09.23 from 8 AM to 8:30 PM

Sunday 24.09.23 from 8 AM to 4 PM

## FESTIVAL SCHEDULE

Friday 22.09.23  
12 to 7:30 PM

Saturday 23.09.23  
9 AM to 7:30 PM

Sunday 24.09.23  
9 AM to 3 PM

## FESTIVAL MAP



COSTA BRAVA - GIRONA

# SEA OTTER EUROPE



## SPORTS PROGRAM

FRIDAY 22

12.00h		FESTIVAL OPENING	SEA OTTER EUROPE FESTIVAL
12.15h		BIKE MUSEUM OPENING	PAVILION (CENTER COURT)
12.15h		KIDS ACTIVITIES OPENING - Pump Track & Wood Park	GREEN ZONE / URBAN ZONE
12.30h		START DEMOBIKE	DEMOBIKE CIRCUIT
12.30h		START "SEA OTTER CONNECT" CONFERENCE	CONFERENCE ROOM PAVILION
14.00h		START WORLD EBIKE SERIES (ROUND 1)	WES ZONE
17.00h		START SHORT TRACK	XCE/XCC ZONE
17.00h		LIVE MUSIC SHOW	STAGE URBAN ZONE
19.00h		END DEMOBIKE	DEMOBIKE CIRCUIT
19.30h		FESTIVAL CLOSING	SEA OTTER EUROPE FESTIVAL

SATURDAY 23

09.00h		FESTIVAL OPENING	SEA OTTER EUROPE FESTIVAL
09.05h		START CANYON GIRONA GRAVEL RIDE - Distancia llarga	AVINGUDA TARRADELLAS
09.30h		START DEMOBIKE	DEMOBIKE CIRCUIT
09.30h		START SCOTT MARATHON <small>XCM PRO / XCF PRO + OPEN</small>	MTB START
10.00h		START SUPER CUP YOUTH	MTB START
11.00h		DIRT EXHIBITION by JAN FRODENO FUND	XCE/XCC ZONE
12.00h		EXHIBITION ELITE TRIAL	TRIAL ZONE
13.00h		LIVE MUSIC <i>VERMUT MUSICAL</i>	URBAN ZONE
14.00h		LIVE MUSIC <i>DJ FABY FINISH SCOTT</i>	GREEN ZONE
14.00h		START WORLD EBIKE SERIES (ROUND 2)	WES ZONE
15.30		START OPEN ESCOLAR by SEA OTTER EUROPE	MTB START
16.00h		START ELIMINATOR CONTINENTAL SERIES	XCE/XCC ZONE
17.00h		START MTB CLASSIC - Aniversario "Copa Grundig"	MTB START
17.00h		EXHIBITION TRIAL Dual competition	TRIAL ZONE
18.00h		LIVE MUSIC SHOW	STAGE URBAN ZONE
19.00h		END DEMOBIKE	DEMOBIKE CIRCUIT
19.30h		FESTIVAL CLOSING	SEA OTTER EUROPE FESTIVAL

SUNDAY 24

08.00h		SALIDA CICLOBRAVA by ORBEA	PASSEIG DE LA DEVESA
09.00h		FESTIVAL OPENING	SEA OTTER EUROPE FESTIVAL
09.00h		SALIDA SHIMANO SUPER CUP MASSI <small>CADET, JUNIOR (M), MASTER 20/40 (M) &amp; MASTER 40/50/40 (M)</small>	MTB START
09.15h		SALIDA CANYON GIRONA GRAVEL RIDE - Distancia Corta	AVINGUDA TARRADELLAS
09.15h		SALIDA COPA GIRONA TRIAL by SEA OTTER EUROPE	TRIAL ZONE
09.30h		SALIDA CORRATEC EBIKE DAY - GIRONA	AVINGUDA TARRADELLAS
09.30h		START DEMOBIKE	DEMOBIKE CIRCUIT
10.40h		SALIDA SHIMANO SUPER CUP MASSI <small>ELITE (M), U23 (M), JUNIOR (M) &amp; MASTER 30 (M)</small>	MTB START
11.00h		DIRT EXHIBITION by JAN FRODENO FUND	XCE/XCC ZONE
11.00h		INICIO MINI DH by SEA OTTER EUROPE	WES ZONE
11.00h		LIVE MUSIC SHOW	SOE CLUB
12.00h		LIVE MUSIC <i>DJ FABY</i>	STAGE URBAN ZONE
13:00h		START SHIMANO SUPER CUP MASSI <small>ELITE (M) &amp; U23 (M)</small>	MTB START
14.30h		END DEMOBIKE	DEMOBIKE CIRCUIT
15:00h		FESTIVAL CLOSING	SEA OTTER EUROPE FESTIVAL

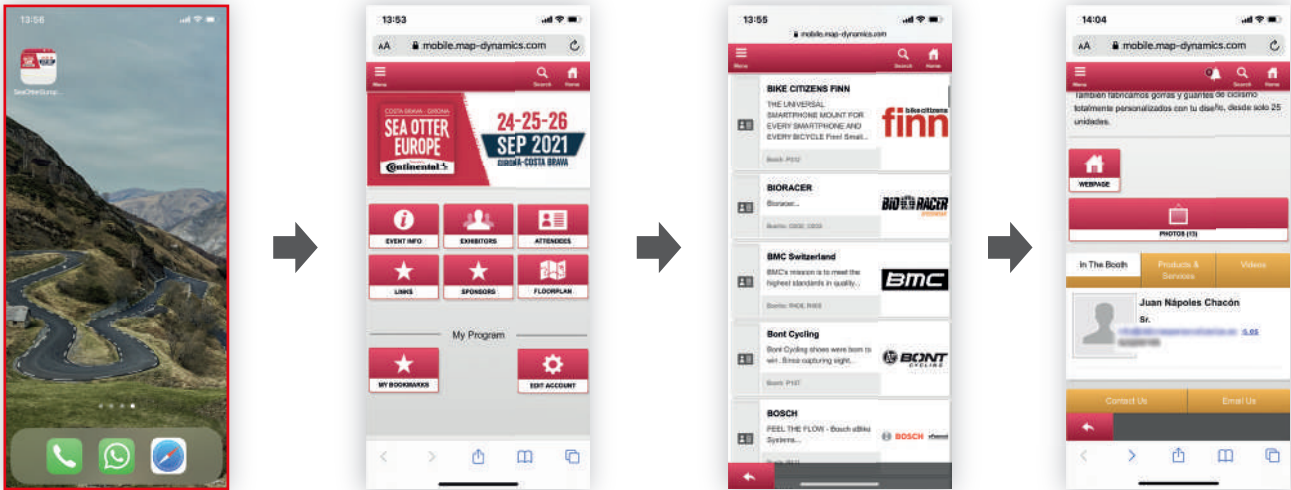
SPORT EVENTS  
 DEMOBIKE  
 OPENING / CLOSING FESTIVAL  
 ACTIVATIONS  
 SOECONNECT  
 LIVE MUSIC

COSTA BRAVA - GIRONA

# SEA OTTER EUROPE

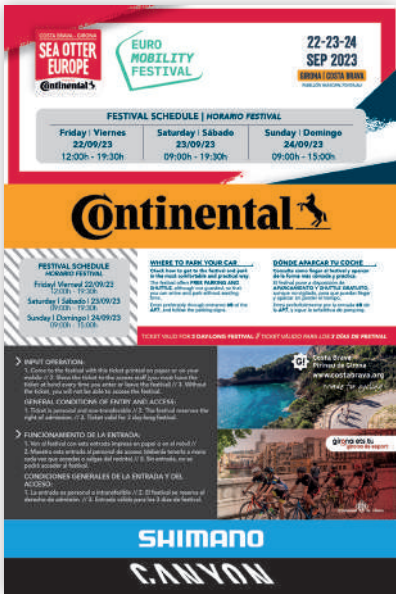
Presented by

## DISCOVER THE EXPO AREA



SEE THE BRANDS LIST

## GET YOUR TICKET OR WRISTBAND



The **athlete** bracelet has the same function as the festival ticket. Participants will get their **athlete** bracelet at the time of collection of the number, in the registration room. But the participant is recommended to **download their ticket** (through this link) to be able to access within the festival. **Once you have collected the number and the bracelet, you can enter and leave the venue with it, without having to enter.**



GET YOUR TICKET



Sea Otter Europe Costa Brava Girona by Continental will provide a free bike wash and maintenance service for **PRORIDE** [www.proridebike.com](http://www.proridebike.com). Get your bike tuned easily and free of charge. You'll also be able to learn more about the **PRORIDE** range of products made by Proquimia, a company with over 50 years' experience of developing products for the maintenance and care of vehicles which is now at the service of cyclists.

Here's a video explaining how the **PRORIDE OFFICIAL BIKE WASH** will operate.  
[www.instagram.com/p/CwxIPybsxFM/](https://www.instagram.com/p/CwxIPybsxFM/)

**PRORIDE** will be present throughout the festival to offer its experience and knowledge to all cyclists. It will also raffle three complete bicycle cleaning and maintenance kits. To enter you just have to scan this QR code, which you'll also find at the washing point and the **PRORIDE [Y14]** stand and sign up. Don't forget to follow the @proride\_bike account on Instagram to find out whether you've won.



Don't miss out on this chance to discover how to ensure that your bike's as good as new and win a full basket of products.  
[www.proridebike.com/product-category/productos/](http://www.proridebike.com/product-category/productos/)

