



Sant Julià de Loria Andorra
30/05 - 31/05

2026





EVENT INFORMATION



On the weekend of May 30th and 31st we move cycling to Andorra, Naturland, an ideal space to enjoy cycling in the mountains of Andorra, with spaces adapted to all levels, whether you are a beginner or an expert, or if you prefer to come with your family, here you will find the adrenaline you are looking for among the landscapes of La Rabassa and Sant Julià de Lòria.

We will be able to enjoy authentic XCO with the Shimano Super Cup Massi and the participants of the Marathon Cup BTT and there will also be time for the little ones with the XCO Super Cup Youth competition, for the categories from pre-teen to Infant. In addition, there will be a World Cup event of the HERO UCI Marathon World Cup.

It will be a full weekend in a privileged space and also located in the adventure park facilities.

LOCATION



NATURELAND

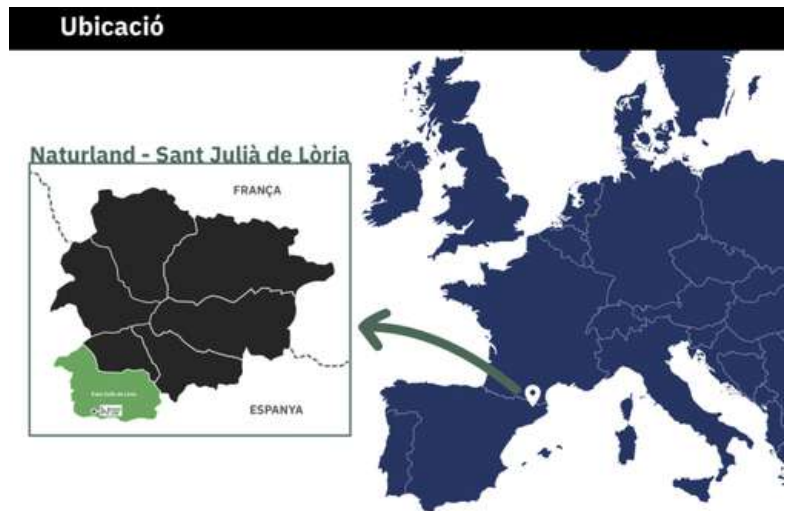


HOW TO GET THERE?

Address:

La Rabassa Nordic Ski Resort –
Naturland (Altitude 2000) Carretera
de la Rabassa – Km.8 AD600 – Sant
Julià de Lòria (Andorra)

Naturland is located in the parish of
Sant Julià de Lòria, in the south of
Andorra, about 15 km from Andorra la
Vella, at an altitude of 2,000 meters.



By car:

From Spain:

From Barcelona: approximately 2h 45min (200 km).

Take the C-16 to the Cadí Tunnel.

Continue along the N-145 to the Andorran border.

When you arrive in Sant Julià de Lòria, follow the directions of La Rabassa -
Naturland (Cota 2000).

From Lleida: approximately 2 hours (150 km).

Take the C-14 towards Andorra.

We cross the border and continue towards Sant Julià de Lòria and then to La
Rabassa – Naturland.

From France:

From Toulouse: approximately 2h 45min (190 km).

We take the A66 and then the N20 to Pas de la Casa.

We cross the Envalira Tunnel and follow the signs to Sant Julià de Lòria.

Parking:

Naturland offers free parking at Cota 1600 and Cota 2000, but it is
recommended to arrive early.



By Bus

Several bus companies connect Andorra with Spain and France.

From Spain

Directbus: Barcelona (Aeroport i Sants) – Andorra (3h).

Alsa: Departures from Barcelona, Lleida and Madrid.

Andbus: Barcelona – Andorra (3h).

Recommended stop: Sant Julià de Lòria. From there, take a taxi or private transport to Naturland (Cota 2000).

From France

Montmantell or Andbus: Departures from Toulouse and other French cities.

By plane

The closest airports to Andorra are:

Andorra-La Seu d'Urgell Airport (LEU)

km from Saint-Julian-de-Loria.

Commercial flights from Madrid with Air Nostrum.

Barcelona-El Prat Airport (BCN)

200 km from Andorra (3 hours by car or bus).

Bus connections available with Directbus or Andbus.

Toulouse-Blagnac Airport (TLS)

190 km from Andorra (2h 45min by car).

Buses available from Tolosa to Andorra.



INTERESTING INFORMATION

Nearby accommodation

Hotel Folch – Calle de l'Oria, 6, AD600 Sant Julià de Lòria Imperial – Av. Rocafort 27, AD600 Sant Julià de Lòria Hotel Sol-Park – AD600 Sant Julià de Lòria Hotel Barcelona – Ctra. Is de Civís (Aixovall), AD600 Sant Julià de Lòria

Nearby restaurants

Restaurant Pizzeria Venezia – Av. Rocafort 19, Sant Julià de Lòria Borda de l'Avi – Carretera de la Rabassa, km 6, Sant Julià de Lòria Restaurant San Telmo – Av. Virgin of Canòlich, 25, Sant Julià de Lòria

Nearby hospitals

Our Lady of Meritxell Hospital – Av. Fiter i Rossell Sant Julià Medical Center – Av. Verge de Canòlich, Sant Julià de Lòria

Parking areas

Naturland parking – Parking inside the park facilities Municipal parking Sant Julià de Lòria – Located in the center of the village Tobotronic parking – For visitors to the park

Map of Interesting Information: <https://comusantjulia.ad/ca/turisme/allotajts-restuacio-i-aparcaments/planol/>

Other useful information

Currency: Euro (€)

Language: Catalan (Spanish and English are widely spoken)

Emergency telephone number: 112

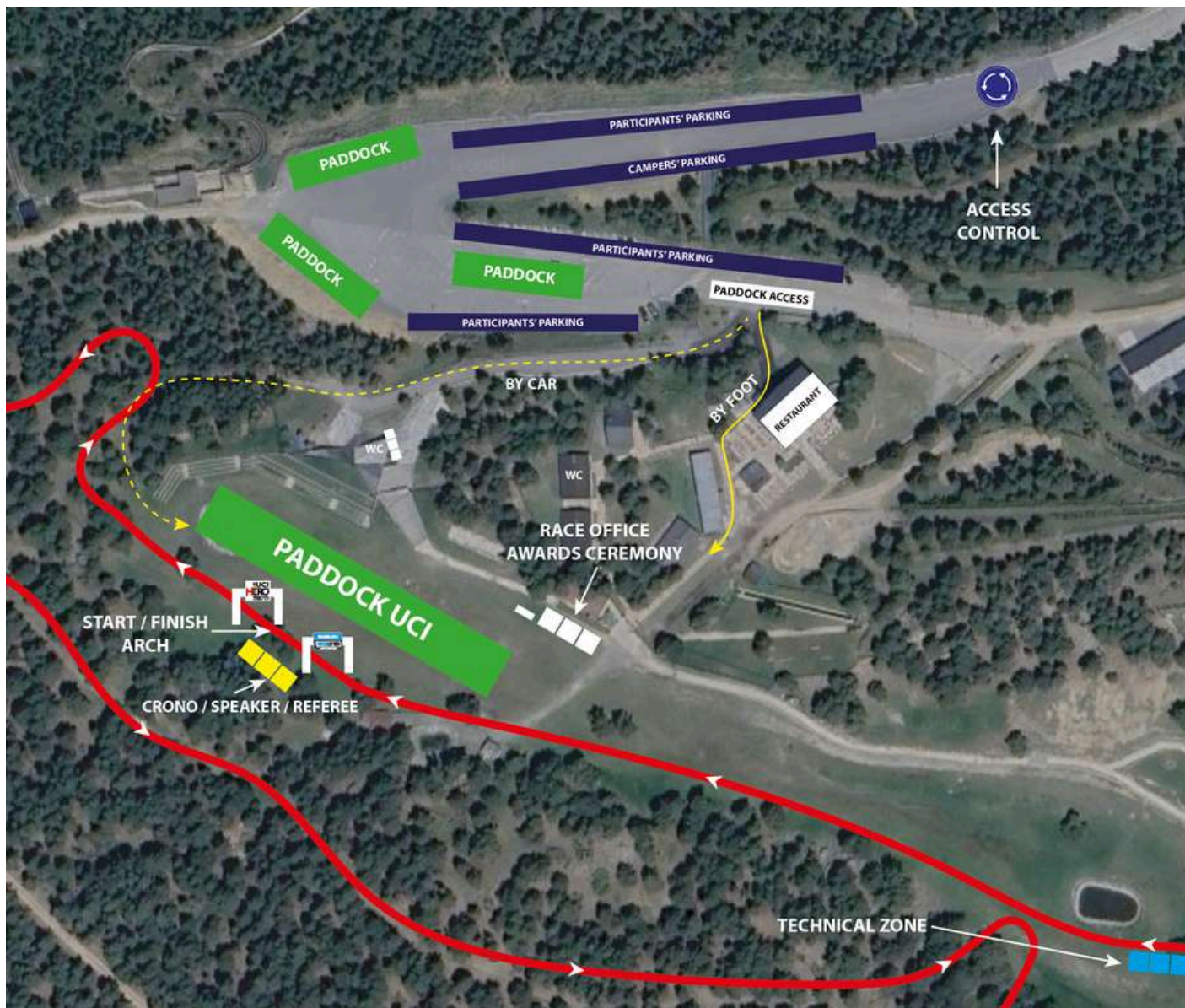
Voltage: 230V, plug type F (European standard)



EVENT MAP



NATURLAND COTA 2000



INSTITUTIONAL SPONSOR



COMPENSACIÓ EDICIÓ 2025



SPONSOR CCI

SPONSORS SUPERCUP



SPONSORS MARATHON BTT



SPONSOR WORLD CUP



OFFICIAL NUTRITION



OFFICIAL BIKE WASH



SUPPORTED BY



OFFICIAL MAPPING



ORGANIZING



PROGRAM

Saturday, May 30th



SHIMANO SUPER CUP MASSI

- 08:00h → Bib collection (up to 30 minutes before each race)
- 09:30h → 1st start Cadet, Junior (F), Master (F) and Master 40/50/60 (M)
- 11:00h → 2ª start Elite (F), S23 (F), Junior (M) y Master 30 (M)
- 11:15h → Awards ceremony Cadet, Junior (F), Master 30/40 (F) i Master 40/50/60 (M)
- 12:45h → 3ª Salida Elite/S23 (M)
- 14:15h → Awards Ceremony Shimano Super Cup Massi
- 14:00h → 15:15h Super Cup Youth Circuit Reconnaissance

SUPER CUP YOUTH

- 09:00h – 16:00h → Super Cup Youth bib number collection
- 16:00h → Start of Pre-Benjamin Super Cup Youth
- 16:15h → Start of Benjamin Super Cup Youth
- 16:30h → Start PRINCIPIANTE Super Cup Youth
- 17:00h → Start of ALEVIN Super Cup Youth
- 17:50h → Start of INFANTIL Super Cup Youth
- 18:30h → Super Cup Youth Awards Ceremony

MARATHON CUP

- 12:00 - 18:00 → Bib collection Scott Marathon Cup.
- 12:00 - 18:00 → Bib collection Hero UCI Marathon World Cup.

Sunday, May 31st

MARATHON CUP

- 7:00h - 9:00h → Bib collection SCOTT Marathon Cup
- 09:30h → Start SCOTT Marathon Cup BTT XCM
- 09:35h → Start SCOTT Marathon Cup BTT XCP

HERO UCI MARATHON WORLD CUP

- 7:00-8:00 → Bib number collection
- 8:30h → Salida Elite HERO UCI MARATHON WORLD CUP NATURLAND (ANDORRA)
- 8:35 → Salida Eit (W) HERO UCI MARATHON WORLD CUP
- 8:36 → Start of the Masters HERO UCI MARATHON WORLD CUP

- 12:30 PM → HERO UCI MARATHON WORLD CUP Awards Ceremony
- 13:00h → SCOTT Marathon BTT Naturland Awards Ceremony



UCI
HEROTM
MARATHON
WORLD CUP



31 MAY 2026



INSTITUTIONAL SPONSORS:

HERO UCI WORLD CUP PARTNER:

OFFICIAL BIKE WASH:



OFFICIAL SPONSORS:

OFFICIAL MAPPING:

SUPPORTED BY:

ORGANITZING:





REGISTRATION

Registrations can be made through the official website of the Uci HERO Marathon World Cup.

For any queries you can contact: Telephone: +34 938 088 091.

Email: hola@ocisport.net Registrations close 7 days before the event, on Friday at 23:59.

[HERO UCI REGISTRATIONS](#)

The route that is shown further ahead of the World Cup is a route that can also be run OPEN, it runs along the same trails and paths where the best runners in the world will battle.

[HERO UCI OPEN REGISTRATIONS](#)

PADDOCK

The Paddock Space is 30 m², teams that want to reserve a paddock must do so through the following email:

julia.karbon@heroucim Marathon World Cup.com

Meters can be requested for 30.00 Euros per m².



PRESENTATION

This is a unique event that, due to its geographical location and its place in the calendar, will attract many of the best riders in the discipline. The race will have a spectacular route that will take cyclists along the paths and trails of the impressive landscapes of the Pyrenees. The race is part of the Bike Show Naturland, an exceptional event where cycling lovers can enjoy a weekend full of cycling activities, such as the Shimano Super Cup Massi, the MTB Marathon Cup, the UCI XCM World Cup or the YOUTH Supercup for the youngest.

Nature Reserve Andorra

The heart of the Pyrenees beats to the rhythm of an enormous natural paradise.

The race takes place among the peaks, valleys and forests of one of the great natural paradises of the continent, the Pyrenees. At the heart of this enclave is Naturland (Andorra), which has become a reference for cyclists and lovers of outdoor leisure. Breathtaking views, an inspiring landscape and an icon of the most beautiful nature.



ROUTE

The race route is 64.71 km long and has a positive elevation gain of 2,239 meters, taking place along high mountain paths and trails in the Pyrenees, with a demanding and technical route.

Departure from the Naturland Bike Center (elevation 2000), with a rapid start in altitude that progressively leads to areas close to 2,200 m, combining tracks and trails.

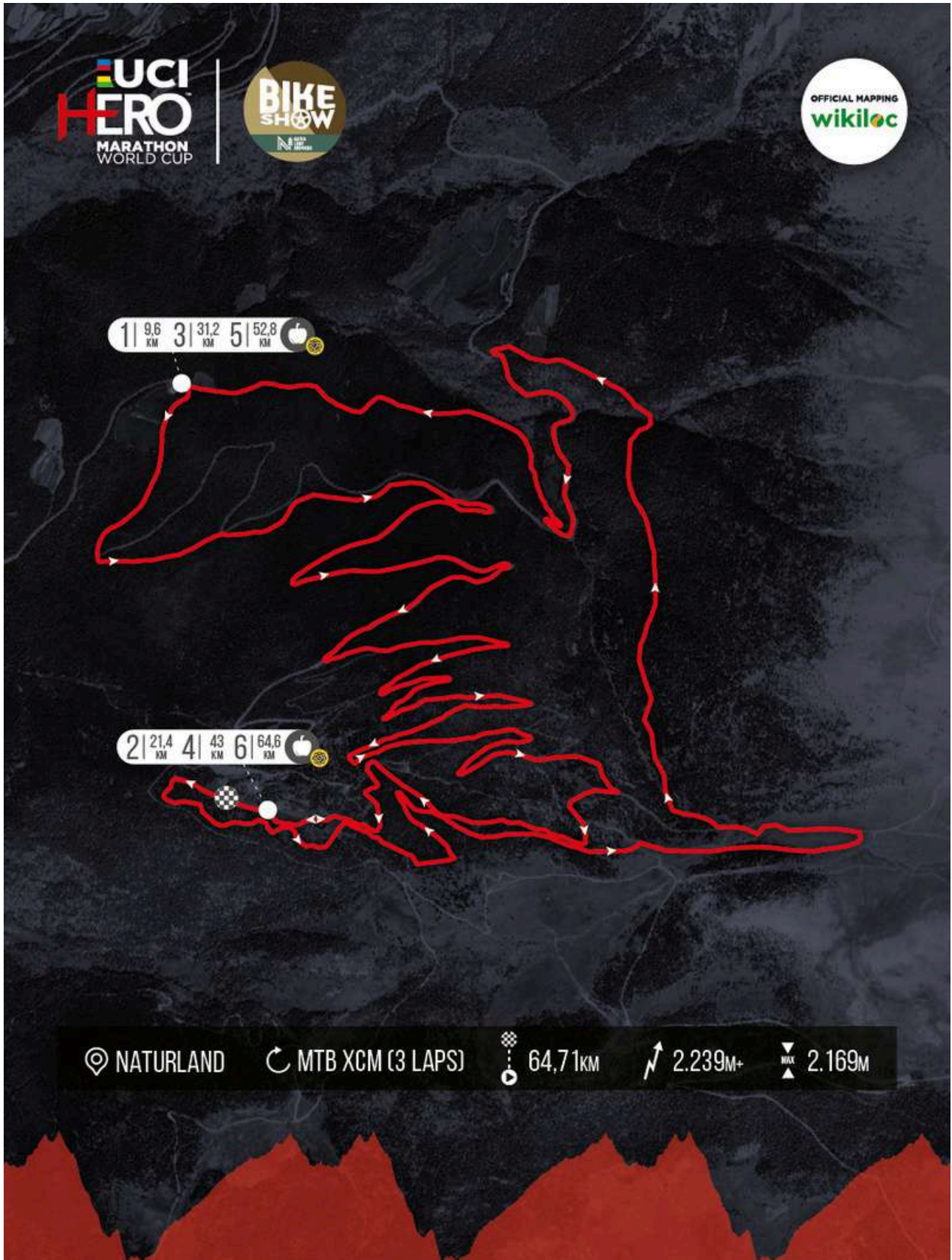
Next, the participants face a long descent to the Aubinyà river valley (elevation 1,670 m), with fast and technical sections.

Then, the route passes through Juberri and La Rabassa, where a final climb of 13 km begins, constant and demanding, which returns to the high altitudes.

Finally, sections of path and track are linked until we reach Naturland again (elevation 2000), closing a tough and very complete circuit.



ROUTE



ROTOMETER

The route meter indicates the checkpoints and control points that will be taken into account along the route of the test, providing them with control personnel who will ensure the safety of the participants. They will also inform potential road users and residents of the area.

A time interval is indicated between 28 km/hour, for participants expected to travel at a higher speed, and 10 km/hour for participants expected to travel at a lower speed. This range provides sufficient margin to expect that participants will pass through the area within the estimated time.



ROTOMETER

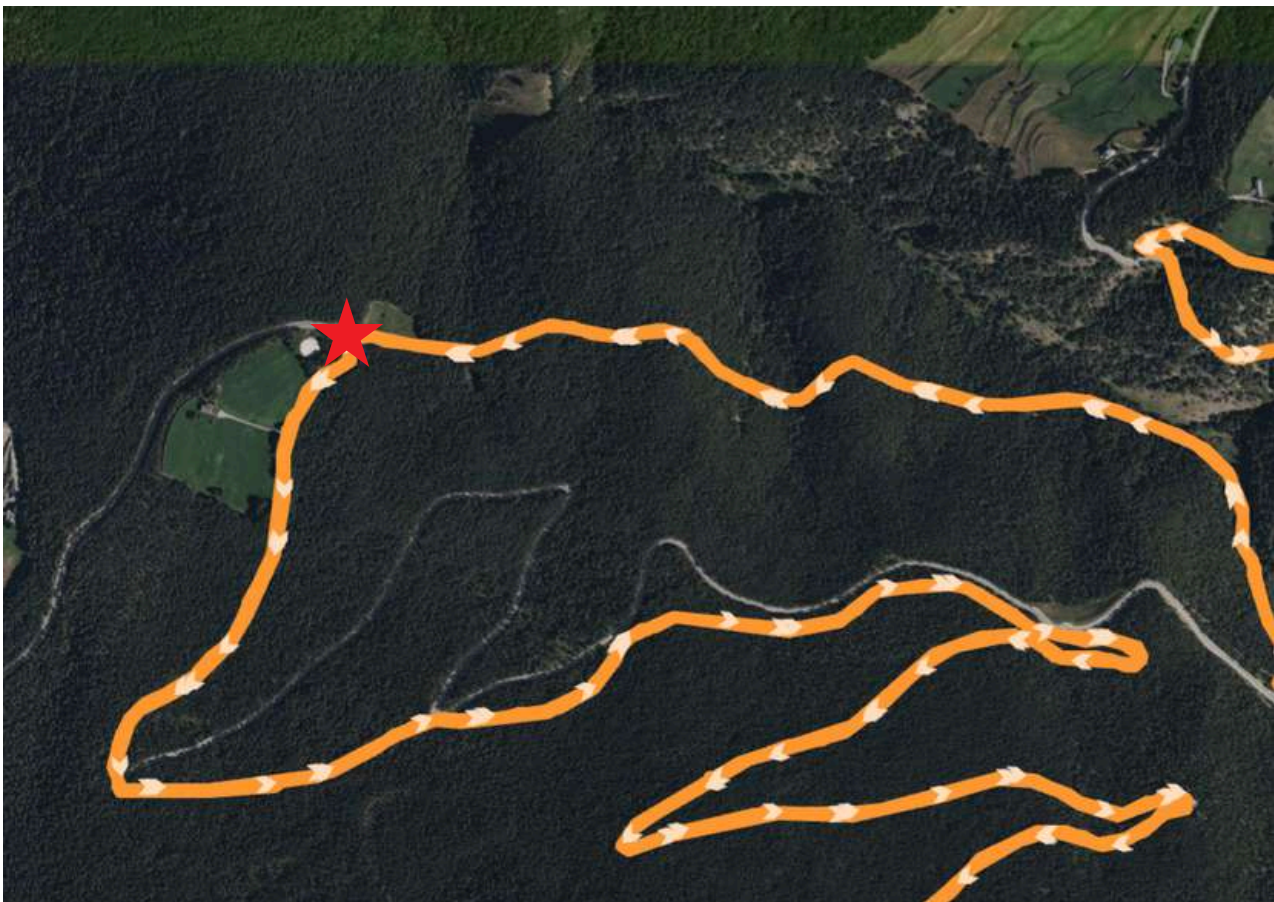
km		km	28 km/h	23 km/h	10 km/h
0,00	START	0,00	8:30	8:30	8:30
0,76	CAUTION: Joining gravel road – Exit from Naturland	0,76	8:31	8:32	8:34
3,86	Reunion with return route	3,86	8:38	8:40	8:53
5,80	Leaving main gravel road	5,80	8:42	8:45	9:04
9,17	Right turn – singletrack entry	9,17	8:49	8:53	9:25
12,13	CAUTION: Joining CS-131 road	12,13	8:56	9:01	9:42
12,74	Right turn – Leaving CS-131 road	12,74	8:57	9:03	9:46
13,91	Tech Zone 1600 – Entry onto CS-130 road	13,91	8:59	9:06	9:53
14,39	Right turn – Leaving CS-130 road	14,39	9:00	9:07	9:56
14,71	CS-130 road control	14,71	9:01	9:08	9:58
15,33	CAUTION: Joining CS-130 road	15,33	9:02	9:10	10:01
16,99	CAUTION: Left turn – Leaving CS-130 road	16,99	9:06	9:14	10:11
20,21	CAUTION: crossing main gravel road	20,21	9:13	9:22	10:31
20,64	Reunion with outbound route	20,64	9:14	9:23	10:33
20,86	Left turn – singletrack entry	20,86	9:14	9:24	10:35
21,08	CAUTION: Gravel road crossing – Entry into Naturland	21,08	9:15	9:25	10:36
21,35	TZ 2000	21,35	9:15	9:25	10:38
21,44	Finish lane passage	21,44	9:15	9:25	10:38
22,22	CAUTION: Joining gravel road – Exit from Naturland	22,22	9:17	9:27	10:43
25,33	Reunion with return route	25,33	9:24	9:36	11:02
27,29	Leaving main gravel road	27,29	9:28	9:41	11:13
30,66	Right turn – singletrack entry	30,66	9:35	9:49	11:33
33,66	CAUTION: Joining CS-131 road	33,66	9:42	9:57	11:51
34,27	Right turn – Leaving CS-131 road	34,27	9:43	9:59	11:55
35,46	Tech Zone 1600 – Entry onto CS-130 road	35,46	9:45	10:02	12:02
35,94	Right turn – Leaving CS-130 road	35,94	9:47	10:03	12:05
36,25	CS-130 road control	36,25	9:47	10:04	12:07
36,88	CAUTION: Joining CS-130 road	36,88	9:49	10:06	12:11
38,54	CAUTION: Left turn – Leaving CS-130 road	38,54	9:52	10:10	12:21
41,79	CAUTION: crossing main gravel road	41,79	9:59	10:19	12:40
42,21	Reunion with outbound route	42,21	10:00	10:20	12:43
42,43	Left turn – singletrack entry	42,43	10:00	10:20	12:44
42,66	CAUTION: Gravel road crossing – Entry into Naturland	42,66	10:01	10:21	12:45
42,95	TZ 2000	42,95	10:02	10:22	12:47
43,03	Finish lane passage	43,03	10:02	10:22	12:48
43,81	CAUTION: Joining gravel road – Exit from Naturland	43,81	10:03	10:24	12:52
46,93	Reunion with return route	46,93	10:10	10:32	13:11
48,88	Leaving main gravel road	48,88	10:14	10:37	13:23
53,64	Right turn – singletrack entry	53,64	10:24	10:49	13:51
55,34	CAUTION: Joining CS-131 road	55,34	10:28	10:54	14:02
55,95	Right turn – Leaving CS-131 road	55,95	10:29	10:55	14:05
57,15	Tech Zone 1600 – Entry onto CS-130 road	57,15	10:32	10:59	14:12
57,62	Right turn – Leaving CS-130 road	57,62	10:33	11:00	14:15
57,95	CS-130 road control	57,95	10:34	11:01	14:17
58,57	CAUTION: Joining CS-130 road	58,57	10:35	11:02	14:21
60,23	CAUTION: Left turn – Leaving CS-130 road	60,23	10:39	11:07	14:31
63,46	CAUTION: crossing main gravel road	63,46	10:45	11:15	14:50
63,89	Reunion with outbound route	63,89	10:46	11:16	14:53
64,15	Left turn – singletrack entry	64,15	10:47	11:17	14:54
64,33	CAUTION: Gravel road crossing – Entry into Naturland	64,33	10:47	11:17	14:56
64,65	TZ 2000	64,65	10:48	11:18	14:57
64,71	FINISH	64,71	10:48	11:18	14:58
			2:18	2:48	6:28

ROUTOMETER

SUPPLY AREA POINTS:

First Technical Assistance and LIQUID + SOLID Supply Area, km 13.91 of the race:

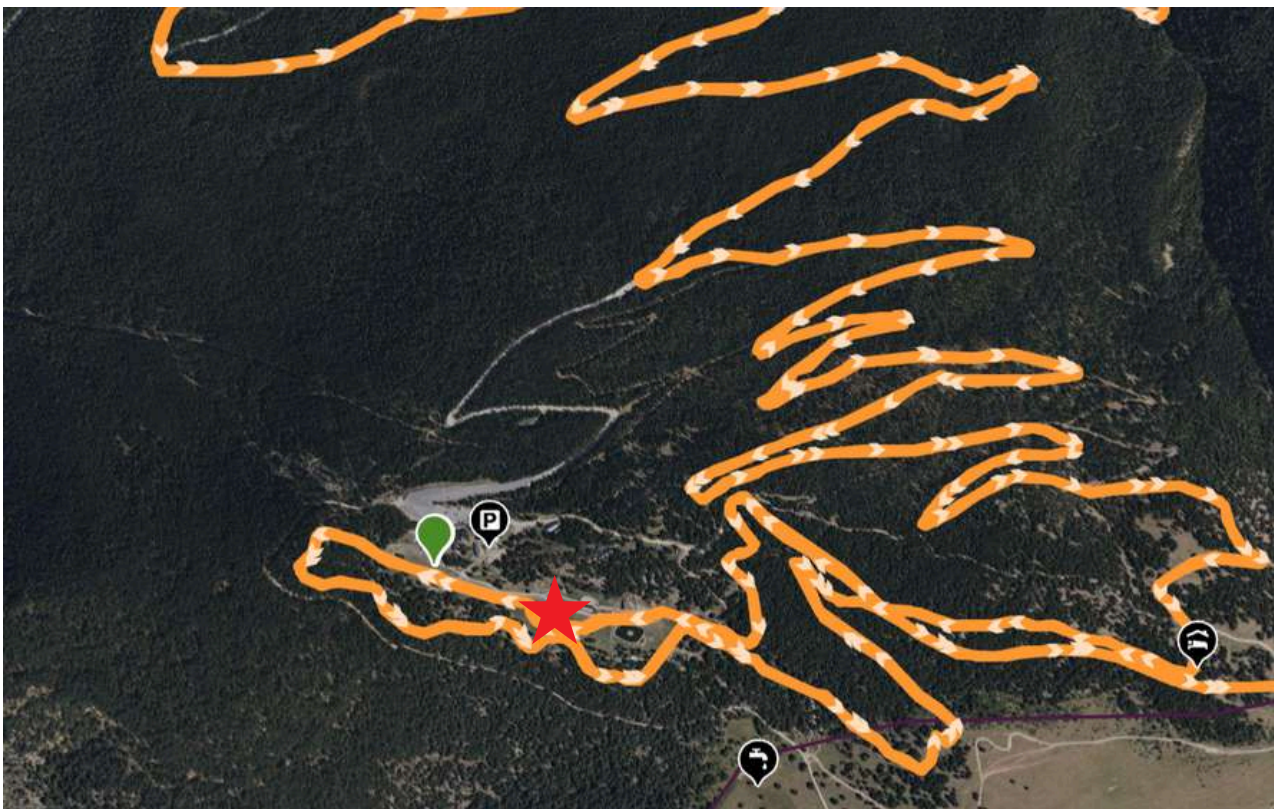
- COORDINATES: 42.448626, 1.517192
- Link to maps: <https://maps.app.goo.gl/qrzEzsztZaSzQBta8>



ROUTOMETER

Second Liquid + Solid Food Zone Point + Technical Zone (mechanical assistance), KM 21.35 of the race:

- Coordinates: 42.434414, 1.521135
- Enllaç a Maps:(<https://maps.app.goo.gl/XMVEXhQGWYu7me8XA>)





INFORMATION

CATEGORIES

- Individual (OPEN)
- Elite men/women
- Master's Degree Men/Women

UCI licenses are mandatory for a Rider to compete in each UCI Marathon World Cup race.

LICENSES

Licensing requirements for open races are set by the National Federation in the host country and vary depending on the event. It is the Rider's responsibility to verify and comply with applicable licensing requirements.

SCORE and CLASSIFICATION

On Monday, the results and updated standings of the HERO UCI World Cup will be published within 12:00 hours after each race on the websites www.uci.org www.heroucimarathonworldcup.com.

The following points will be awarded for each position from 1st to 60th in the respective general.

UCI points in the UCI ranking will be directly linked to the placement achieved in each race. Each participant in the HERO UCI Cross-Country Marathon World Cup will accumulate points in each race for the overall series classification. After the five races, the overall leader will be the rider with the highest overall score.

POINTS TABLE

250 1st place	74 16th place	44 31st place	22 46th place
200 2nd place	72 17th place	42 32nd place	21 47th place
160 3rd place	70 18th place	40 33rd place	20 48th place
150 4th place	68 19th place	38 34th place	19 49th place
140 5th place	66 20th place	36 35th place	18 50th place
130 6th place	64 21st place	34 36th place	17 51st place
120 7th place	62 22nd place	32 37th place	16 52nd place
110 8th place	60 23rd place	30 38th place	15 53rd place
100 9th place	58 24th place	29 39th place	14 54th place
95 10th place	56 25th place	28 40th place	13 55th place
90 11th place	54 26th place	27 41st place	12 56th place
85 12th place	52 27th place	26 42nd place	11 57th place
80 13th place	50 28th place	25 43rd place	10 58th place
78 14th place	48 29th place	24 44th place	9 59th place
76 15th place	46 30th place	23 45th place	8 60th place



ECONOMIC AWARDS

The following financial prizes are allocated to the different stages of the Hero UCI Marathon World Cup

XCM
1'500 €
1'200 €
900 €
750 €
600 €
450 €
375 €
300 €
150 €
75 €
6'300 €

[HERO UCI REGULATIONS](#)

Additional information

REFERENCE HOSPITAL

Our Lady of Meritxell Hospital – Av. Fiter i Rossell
Hours: Open 24 hours

LA SEU D'URGELL HOSPITAL Passeig de Joan
Brudieu, 8, 25700 La Seu d'Urgell, Lleida Opening
hours: Open 24 hours Telephone: 973350050

EMERGENCY PHONE

Organization:

- +34 638 602 777
- +376 646 527

Emergencies: 112

INSTITUTIONAL SPONSORS



SPONSORS SUPER CUP



SPONSORS CCI



SPONSORS MARATHON CUP



SPONSORS WORLD CUP



OFFICIAL NUTRITION



OFFICIAL BIKE WASH



SUPPORTED BY



OFFICIAL MAPPING



ORGANIZING

